



Friends of
COMMUNITY
Living SERVICES

Evening
with Friends

THURSDAY | SEPTEMBER 17, 2015 | 5PM - 10PM | LAUREL MANOR, LIVONIA



BENEFITS

- ◆ *Group Insurance*
- ◆ *Compliance Guidance*
- ◆ *Group Administration*
- ◆ *Online Enrollment*
- ◆ *Superior Service*



***Proud Sponsor of
Community Living Services***

***“Evening With Friends
Annual Awards and Expo”***

***Mary Youngs
Senior Account Manager***

*25900 West Eleven Mile Road
Suite 210
Southfield, MI 48034*

*Phone: 248.996.1842
mary@jsclarkagency.com*

***Paul Kahler
Vice-President***

*25900 West Eleven Mile Road
Suite 210
Southfield, MI 48034*

*Phone: 248.996.1844
paul@jsclarkagency.com*



www.jsclarkagency.com



Thank You...

...for being our guest this evening
as we celebrate freedom, inclusion and independence.

We have an exciting night planned for you
complete with shopping, smooth jazz,
glorious gift baskets, delicious dinner, dessert
and a video feast for the eyes!

Enjoy your evening and let freedom ring!



Schedule of Events

Business Expo

5:00 pm - 9:00 pm

Gift Basket Raffle

5:00 pm - 6:30 pm

Dinner and Dessert

6:45 pm - 8:00 pm

Video Awards

8:00 pm - 9:30 pm

Entertainment Donated By:

Homes of Opportunity and
The J Maxwell Trio featuring Vocalist Rachel Lee Williams



Hosts



Roop Raj

We are fortunate to have Roop here again for a second year! Roop is a home town guy, originally from Troy, Michigan. He began his TV career at the tender age of 14 and one year later he appeared on the Phil Donahue show and was deemed one of the nation's youngest TV personalities!

He is an MSU graduate and worked in Flint, Lansing and New Orleans.

When he came back to Detroit in 2009, he had the great honor to work with his mentor, Mr. Huel Perkins. "I watched him growing up and reached out to him when I had my cable show in Troy. He became my inspiration and has followed my career. I'm honored to be working with him."

Roop is never too busy to give back to the community by volunteering, speaking to groups and emceeding events.



Marie Osborne

Marie is an Anchor and Reporter for WJR Radio Detroit. Her work has been heard across the globe and she has been named one of the most influential women in Detroit radio. She is a three time winner of the national Edward R. Murrow award, and the winner of a national Headliner Award. Marie has been honored numerous times by the Michigan Association of Broadcasters and Associated Press.

She is a graduate of the University of Detroit. Marie's passion is reporting on the renaissance of Detroit and the region.

She and her husband have three older children and her hobbies include reading, knitting, jewelry-making and button collecting.

2015 Board of Directors



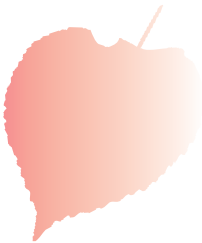
Janet Myers - *Chairperson*
Carol Letasi - *Secretary*
Don Nicholson - *Treasurer*
Steven Dell - *Director*
Cinda Riley - *Director*
Neva St. Louis - *Director*
Emma Dale-Hench - *Director*

James L. Dehem - *President & CEO*
William Yordy - *VP Administration & CFO*
Paulette Fullerton - *Senior Attorney*



Dohn Hoyle - *Chairperson*
Steven Saules - *Vice Chairperson*
Angela Martin - *Treasurer*
Sylvia Kloc - *Secretary*
Bonnie Walker - *Director*
Renee Uitto - *Director*
Scott Decker - *Director*
Gino Byrd - *Director*
Richard Clark - *Director*
Kristen McNamara - *Director*

James L. Dehem - *President & CEO*
Paul Newman - *VP Operations & COO*
William Yordy - *VP Administration & CFO*
Cynthia Johnson - *VP Corporate Affairs*
Manny Singla - *Chief Information Officer*
Annette Downey - *Executive Director,*
CLS Oakland County
Suzanne Henson - *Operations Director, Personal*
Supports & Services Dept.-CLS Wayne County



Mission

- To assist and advocate for each person to have supports they want and need:
 - To exercise control and authority over their lives
- To live a life of freedom, opportunity and relationships as family, friends and neighbors
 - To share in full community membership and citizenship

Vision

People will fully participate in their communities and have a quality of life which comes from freedom and its responsibilities, the authority to make their own life decisions and the financial resources to implement them.

Where Does the Money Go that is Raised Tonight?

The donations from tonight's event
go directly to people
supported by CLS

The way it works is people who are looking to get connected to the community, start their own small businesses or would like to get involved in an activity can submit a Friends of CLS Request form through their Supports Coordinator. The request is then reviewed and if approved, the money will be sent to the establishment that is providing the services.

Friends of CLS pays for things
that Medicaid dollars cannot fund such as:
start-up fees for small businesses

- College courses
- Furniture
- Past due utility bills
- Community membership fees

and Much More!



Friend Annual Report

Friends of Community Living Services, Inc. Statement of Financial Position • September 30, 2014

Assets

Current Assets	2013	2014
Cash and Cash Equivalents	\$688,125.00	\$755,684.00
Accounts Receivable	22,317.00	7,031.00
Deposits	0.00	0.00
Total Assets	\$710,442.00	\$762,715.00

Liabilities and Net Assets

Current Liabilities		
Accounts Payable	\$2,291.00	\$309.00
Net Assets		
Unrestricted Net Assets - Operations	708,151.00	762,406.00
Total Liabilities and Net Assets	\$710,442.00	\$762,715.00

Friends of Community Living Services, Inc. Statement of Activities • September 30, 2014

Revenue	2013	2014
Contributions	\$19,932.00	13,327.00
Grant Revenue	0.00	0.00
Reimbursement Revenue	54,442.00	24,501.00
Fundraising Revenue	82,843.00	32,111.00
Investment Revenue	10,846.00	55,253.00
Total Revenue	168,063.00	125,192.00
Expenses		
Client Activity	45,463.00	48,547.00
Professional Fees, Contracted Services & Administrative Expense	13,318.00	18,953.00
Office Supplies	61.00	2,473.00
Repairs and Maintenance	104.00	0.00
Miscellaneous	298.00	964.00
Total Expenses	59,244.00	70,937.00
Change in Net Assets	108,819.00	54,255.00
Net Assets, Beginning of Year	599,332.00	708,151.00
Net Assets End of Year	\$708,151.00	\$762,406.00

Provider Network

ADA Homes, Inc.

AHS Community Services

Alternative Services, Inc.

Alternative Services, Inc.

(Business Ventures Corp.)

Arkay, Inc.

Arnold Community Training Home

Attitude Recovery Center

Avalon Care, LLC

BCA Stonecrest Center

Behavioral Center of MI

Best Private Duty Health Care

Bluelight, Inc.

Building Bridges Therapy Center

Center for Positive Living Supports

Centria Healthcare

Christ Centered Homes

Clark and Associates Psychological Services

Chrysalis Developmental Home, Inc.

Community Administrative Services, Inc.

Community Choices, Inc.

Community and Home Supports, Inc.

Community Housing Network

Community Opportunity Center

Community Programs and Services

Community Spirit Homes

Community Work Opportunities

Creative Employment Opportunities

Creative Images, Inc.

Davis Community Training Home

Detroit East Health Services (Adult)

Detroit East Health Services (Child)

Developmental Essential Services, Inc.

Domel, Inc.

Domus Vita

EAI Employment Resources

Elmira, Inc.

Enhance, Inc.

Everest, Inc.

Excellent, Inc.

Faith Connections

Frederick's Family Homes, AFC, Inc.

Friends Who Care

Futures HealthCore, LLC

Gaut Community Training Home

Goodwill Industries of Greater Detroit

Havenwyck Hospital

HealthCall of Detroit

Hegira Programs, Inc.

Home Life Styles, Inc.

Homes of Opportunity, Inc.

Howard Community Training Home

Individual Empowerment

"It's All About You, Inc."



Provider Network

Johnson (LaDonna) Community Training Home
Johnson (Sherron) Community Training Home
Jones (Arlene) Community Training Home
Jones (Mary) Community Training Home
Judson Center, Inc.

Kennedy Care Enterprises

Life Center, Inc.
Lewis Community Training Home

Mastrofrancesco AFC, Inc.
Maxim HealthCare Services, Inc.
McEvoy Community Training Home
Midwest Health Care, Inc.
Miller Community Training Home
Money Minders Plus, Inc.

New Life Services, Inc.
New Outlook, Inc.
NOVA

O & B Community Homes
Oakwood Hospital-Taylor

Pappalardo Alternative Placements
Paragon Support Systems
PAS
Passages Community Services, Inc.
Phillips Adult Foster Care Home
Pro Care Unlimited
Professional Outreach Counseling Services, P.C.

Quest, Inc.
Quest, Inc. /CWO

Real Life Living Services
Reliable Direct Care Temporary Services, Inc.
Residential Staffing Agency, Inc.
Rgrps, Inc.

Saints, Inc.
Samaritan Homes, Inc.
Sanford Community Training Home
Second Chance Living Supportive Services
Services to Enhance Potential (STEP)
Smith Community Training Home
SOAR! Ready for Life
Southern Homes
Spectrum Community Services, Inc.
St. John Health Behavioral Health Services
St John Oakland Hospital and Medical Center
Starr Commonwealth
Starr Commonwealth dba PsychSystems

Taylor's Special Care Services, Inc.
The Arc of Dearborn
The Arc of Northwest Wayne County
The Arc of Western Wayne County
The Medical Team, Inc.
True Dreams Staffing Agent

United Horizon
University Physicians Group
Unlimited Home Care, LLC

Watkins Community Training Home

Award Winners

Corey Evonich

“Rough. It was rough.” That’s the word Corey Evonich uses to describe growing up in Detroit, sometimes on the streets with nowhere to go. But from the streets of Detroit to a nice place downriver, Corey is learning how to cope with situations he can’t control and learning that it’s okay to make mistakes. “Sometimes I need help in controlling my anger but with the help of my Provider, Life Center I’ve been able to keep it together. I am working, I have a place to call home and I’m a lot happier now.”



Michael Cieslak

With the help of a CLS Employment Specialist and a Job Coach from Community Work Opportunities, Michael Cieslak has been working at Old Navy in Canton for a while now. He absolutely loves his job and the people he works with are very supportive. “I also love the customers and like to tell them about the sales we are having that day,” said Michael. “Having a job and earning a paycheck is a big deal and it makes me feel like I’m contributing to my life and my family.”

Award Winners



Jaclyn Panick and Jill Moon Both ladies were institutionalized for years and had no control or freedom over their lives. In 2013, they began working with CLS Oakland County to get out of a state hospital in Kalamazoo. They soon became roommates and really enjoy each other and working on their small snack business. Both women are happy to be living in their own home in a nice neighborhood and enjoying being in control of their lives.

Kennescia

Kennescia was going into her senior year of college looking forward to graduating with a degree in Psychology when she got sick. “I was in and out of hospitals for at least 6 months before doctors figured out I had a rare auto immune disease that paralyzed me,” said Kennescia. “It was bad but I always had faith in God that I would get better.” The road to remission has been slow but today Kennescia is walking with a walker and will hopefully get back to school soon. She and her mother give all the glory to God and all of the doctors who have helped her through this time in her life. They are also grateful to her fellow church goers at Grace Community Church.



Award Winners



Greg Moore

Greg communicates with his expressive eyes, if he looks up, the answer is “yes” and if he looks down, the answer is “no.” Greg lived most of his life in a nursing home until one day he met Paula Parkin, Executive Director, Domus Vita. “When I saw his smile and those beautiful eyes, I knew we were going to take him home,” said Paula. Greg likes to help others as much as he can and when a non-profit organization called “Connect Us” helped Greg put together kits for the homeless, it made him happy. “We got Greg involved because he is a social person and wants to contribute,” said Elaine LaMontagne, Director of Vocational Services, Community Work Opportunities. “We are happy to see Greg smile and feel good,” said Elaine.



Susan Robinson and Angel Knox

Caring for someone is an incredible responsibility and no one knows that better than Enhance employees Susan Robinson and Angel Knox. These ladies have incredible patience, understanding and creativity when it comes to caring for others, especially for a woman named Paula. It’s been a long journey to try and get Paula to feel safe and to trust. It literally has taken hundreds and hundreds of hours of patience before she would come out of her home and explore her community with just a little assistance. The patience and persistence have paid off as the ladies and Paula go for rides now, go out to lunch and have fun together.

Award Winners

Nafaa “Noofi” Makadsi

Noofi and his family fled from Iraq after their home was firebombed, twice. During his time in Baghdad, Noofi would draw but his pictures were often scary and full of black and white and sometimes, bloody images. As he settled here and began to find friends and get involved in his community, he became happier and his artwork proves it. Today, his art is full of vivid colors and symbols of love, joy and peace. Noofi just recently held his first art gallery event and he was featured on WDIV-TV 4.



Deshaun Jones

“I want to help young people who may have gone through what I went through as a child and let them know they are going to be okay,” said Deshaun Jones. He and his twin brother entered the foster care system when they were seven years old. Both were separated from each other until they were reunited at the age of 17. “My main mission is to help young kids get back on track and stay there. I really enjoy helping and encouraging them.”

The Gielow Family

Jessi is a beautiful young girl who has a wonderful and loving family. She is 7 years old, uses a wheelchair and uses facial expressions to communicate. She has Pitt Hopkins Syndrome, which is rare genetic disorder, only 500 reported cases of it in the United States. The Gielow family continues to advocate for their daughter and others who share the rare disease.



Friends of Community Living Services Donors

Friend (\$25 - \$99)

Angela Martin
Angelo T Angellotti
Annette Downey
Billie Nagi
Bonnie Walker
Dennis & Sheila Joinville
Drew & Janelle Hansen
Gwen Mraulak
John & Carolyn Carr
John Nicoloff
Karen Fikes
Kris A. Mooney
Margene Willis
Marguerite Schervish
Michael & Maybelle Munn
Michael & Ruth Koss
Nicola & Joan Broggi
Robert & Theresa Moore
Robert A Duncan
Rose Yuhasz
Steven & Lenna Opaleski
Teresa M. Moore
Victor & Pauline Magiera

Advocate (\$100 - \$249)

Brian & Kathy Rice
Camilla Clinton
Cynthia Johnson
Deborah Robins
Debra Plowden
d. Diversified Services
Edward & Irma Youmans
Eric Smith
Gary Lucas
Gerald & Cynthia Miluk
Goodwill Industries
Hal Ravenna
It's All About You Inc.
Jan Martella
John & Laura Robertson
John & Patricia Presutti
Larry Marten
Midwest Healthcare, Inc.
Micro Source, Inc.

O & B Community Homes
Pauline Magiera
Ron and Tiffany Devon
Sylvia Brooks
The Art Experience
Thomas Chapman
William Neimeyer
William Yordy

Mentor (\$250 - \$499)

Creative Employment Opportunities
Judith & Frank Jonna
Moni J. Vojcek
United Horizon
VCE

Patron (\$500 - \$2500)

AHS Homes
Arc Northwest Wayne County
Arc Western Wayne
Community Choices
Community Housing Network
Creative Images, Inc.
Domel, Inc.
Domus Vita
Elmira, Inc.
Enhance, Inc.
Excellent, Inc.
Futures HealthCore
GT Independence
James Dehem
J.S. Clark Agency, Inc.
Kennedy's Care Enterprises, Inc.
Mary Beth Gendjar
Mary L Kramer
Meijer
Numotion
Paul Newman
Personal Accounting Services
Quest/CWO
Saints, Inc.
STEP
TBD Solutions
The Medical Team

* Partial List



Thank You!!!

There is no way this event could happen year in and year out without our wonderful volunteers.

**Special thanks to The Friends of CLS Board
and the CLS Public Relations Committee**

DeAndre Brown

Lena Cervantes

Shari Davidek

Vicky Davis

Nancy Gerbasi

Jan Martella

Raylynda Moore

Jan Myers

Billie Nagi

Melia Osmulski

Davia Rinehart

The entire CLS Accounting department

Laurel Manor Banquet Center

City Events Group

Pask Photography

Graphics East

Thoroughbred Design Group

Great Lakes Trophies

Red Tornado Productions



Gift Baskets

Below is a list of the Gift Baskets that will be raffled off and what CLS department contributed to the basket.

Here Kitty Kitty

Training

Fun Family Time!

Family Services

Joy and Jitters

Administration

Life is Short, Lick The Bowl!

Oakland County

Spoil Me Spa

Central Records/Consumer
Financial Services/Reception

Motor City Brews

Network & Quality Management
departments

About Town

Benefits Coordination/Long
Term Care

Wine and Dine

Customer Service/Intake/Rights
& Advocacy/Dr. Larry Marten

Home Sweet Home

IT department

Fit Foodie

Health Care Coordination and
Integration department





Clinical Improvement ● Data Utilization & Visualization ● Peer Support Training ● Finance ● Strategic Planning ● Project Management ● Administrative Services (HR, IT, Quality, UM)

*Proud supporters of
Community Living Services*

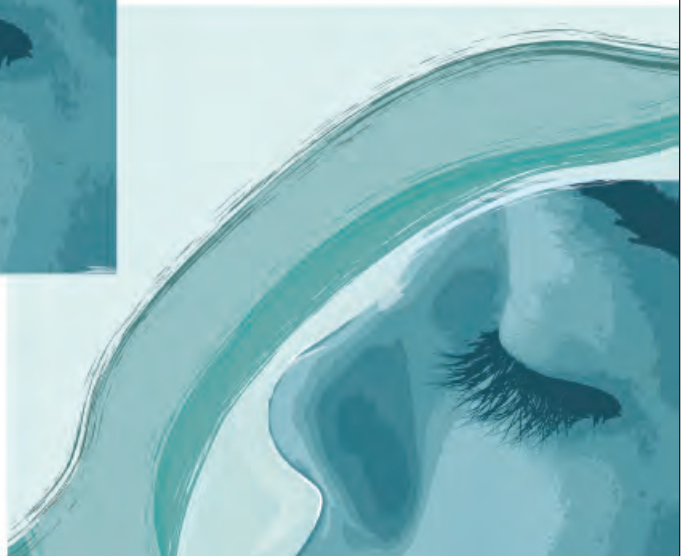
Contact Us:

www.TBDSolutions.com

(877) 823-7348



Dreams to Life



United Horizon

(ph) 866 526 6403

(fax) 313 493 9935

(email) info@unitedhorizons.net

www.unitedhorizons.net

Congratulations!

To Friends of Community Living Services on completing another successful year!

SAINTS INCORPORATED

35115 E. MICHIGAN AVENUE
WAYNE, MI 48184
(734) 722-2221
(734) 722-3854 – FAX

PAUL KENNEDY
EXECUTIVE DIRECTOR



CARF Accredited in:

- Community Services: Community Housing
- Community Integration, Supported Living
- Employment Services:
- Community Employment Service: Employment Supports

DOMUS VITA – CAREGIVERS FOR OVER 250 PEOPLE AGES 3 TO 83

WISHING FRIENDS OF CLS ANOTHER SUCCESSFUL YEAR

DOMUS VITA

TheArtExperience.org 248.706.3304
175 S. Saginaw #109, Pontiac, MI 48342

Youth to Adult Programs
Drop-in Open Studio
Birthdays - Scouts - Homeschoolers
Classes for students with special needs
Experience your WHOLE brain

The Art Experience



Innovative Services

"Division of Creative Employment Opportunities, Inc."

"Empowering People for Success"



Ronald Peguies
Program Supervisor
3757 Commerce Ct.
Wayne, MI 48184

Phone: (734) 727-0872
Fax: (734) 727-0873
ron.peguies@creativeemployment.net
www.creative-employment.org



Excellence in
Workforce Development,
Training & Compliance

www.vceonline.org

Health
education for
professionals,
consumers,
family
members, the
community
and you!



**Together,
let's get informed and
eliminate stigma!**



The Arc[™]

Western Wayne County

2257 South Wayne Road

Westland, MI 48186

734-729-9100

info@thearcww.org

www.thearcww.org

The Arc Western Wayne County advocates for the rights and full participation of all children and adults with intellectual and developmental disabilities.

Achieve with us.



Community Choices, Inc.



**Congratulations
Award Winners
and Thank You
Community
Living Services
for another
successful year!**



Community
HOUSING NETWORK

Opening Doors • Transforming Lives.

Proud partner in building stronger communities!

570 Kirts Blvd . Suite 231 . Troy . MI 48084
PHONE 248.928.0111 . TOLL FREE 866.282.3119
FAX 248.928.0122

In partnership with
Oakland County Community Mental Health Authority

35425 W. Michigan Ave . Suite 3649 . Wayne . MI 48184
PHONE 734.419.7538 . FAX 734.419.7539
In partnership with Community Living Services

33222 Groesbeck Hwy . Fraser . MI 48026
PHONE 248.928.0111 . TOLL FREE 866.282.3119
FAX 586.491.2576

In partnership with Macomb Homeless Coalition
and Hope Center in Macomb

www.communityhousingnetwork.org



EXPRESS

FLOORING

& CARPET

13470 EUREKA ROAD • SOUTHGATE, MI 48195
734-28-FLOOR • (734- 283-5667) • FAX: 734-283-8633



d. Diversified Services

30150 Telegraph Road
Suite 215
Bingham Farms, MI 48025
(248) 633-0033

Your Staffing Partner
Direct & Contract Placements

d. Diversified Services is proud to be a business partner of Community Living Services. The services you provide and the people that benefit from them are most deserving of this special evening of celebration.

Your Life. Your Choice.



Our mission is to help people live a life of their choosing regardless of age or ability.



877 659 4500 | gtindependence.com

CONGRATULATIONS
Award Winners

Your accomplishments over the
past year
have been truly outstanding.

THANK YOU
Community Living Services

We truly value your partnership
and look forward to another year
of helping people create
meaningful lives in their communities.

AHS Community Services, Inc.
"Supporting People...Changing Lives"



Northwest Wayne County thearcnw.org

*Advocates for People
With Developmental Disabilities*

Achieve with us.

We can't help everyone, but everyone can help someone.

Thank You CLS Friends for helping so many people!



Mark J Woolhiser
Investment Advisor
Representative

784 South Main Street
Plymouth Michigan 48170
734-207-8800 x2 office
248-935-8731 cell

Securities offered through Sigma Financial Corporation, Member FINRA/SIPC
MBC Investment Consulting, Inc. is independent of Sigma Financial Corporation



Proud
supporter
of CLS

With a strong local focus, we aim to be the most responsive and innovative complex wheelchair company to do business with for people of all ages. We're here to move lives forward for years to come.

10381 Citation Dtr. Suite 300, Brighton, MI 48166
248.446.3040 phone

Melissa Stuart, OM and Matt Gonzalez, ATP

Numotion.com

numotion
Mobility starts here.

FRIENDS OF CLS BOWLING FUNDRAISER

Saturday ,October 10, 2015
2:00 -5:00 pm
Roosevelt Lanes
6701 Roosevelt Ave
Allen Park, MI 48101

Friends of
COMMUNITY
Living SERVICES



50/50 Raffle
Raffle Baskets

All proceeds
benefit Friends
of CLS

\$20 per person

Includes: Two games of bowling, shoes, pizza and pop

To register call Tiffany Devon at 734-722-7185 or visit:

<http://www.comlivserv.com/events.html>

Friends of Community Living Services is a non-profit organization that raises funds for people served by Community Living Services.

The money raised is for opportunities such as starting a new business, enrolling in college classes, taking cooking classes and much more.



Friends of
COMMUNITY
Living
SERVICES

Midwest Health
Care, Inc.

Home Health Care Service
21880 Farmington Road
Farmington, MI 48336
248-471-9168



JOB AND VOLUNTEER FAIR

**TUESDAY
OCTOBER 20TH
10 A.M. - 12 P.M.**

**FORD COMMUNITY AND PERFORMING ARTS CENTER
15801 MICHIGAN AVE.
DEARBORN, MI 48126**

- **EMPLOYMENT PROSPECTS**
- **VOLUNTEER OPPORTUNITIES**
- **COMMUNITY INVOLVEMENT**

More than 30 Vendors will be on hand to hire, connect or offer you a volunteer position!

**To attend this *FREE* event or be a vendor, contact Tiffany Devon at tdevon@comlivserv.com
or
734-722-7185**

OPEN THE DOOR TO EMPLOYMENT & COMMUNITY CONNECTIONS!



Services
To
Enhance
Potential

Making a Dramatic Difference



SUPPORTED EMPLOYMENT OPPORTUNITIES FOR INDIVIDUALS WITH DISABILITIES

RESPECT • EMPOWERMENT • INTEGRITY • EXCELLENCE
COLLABORATION • COMPETENCY • ACCOUNTABILITY
COMMITMENT

We'd like to thank our business partners for helping our consumers thrive through essential workplace opportunities.
To become a STEP business partner, contact 313.278.3040 or Info@StepCentral.org.

StepCentral.org

2015

Congratulations to
Community Living Services, Inc.
& Evening with Friends Award Winners

The smallest tasks become a miracle of achievement.
Your accomplishments over the past year has been
Truly outstanding and inspirational.



*"Great acts are made up of
small deeds."
- Lao Tzu*



Personal Accounting Services, Inc.
20600 Eureka Road • Taylor, MI 48180
Telephone: (734) 729-3100 • Fax: (734) 729-3100

Friends of COMMUNITY *Living* SERVICES



Towne Square Plaza
35425 Michigan Ave. West
Wayne, MI 48184-1687
734-467-7600

CLS is a manager of a Comprehensive Provider Network funded through the Detroit Wayne Mental Health Authority.



642 East 9 Mile Road
Ferndale, MI 48220
248-547-2668

CLS Oakland County is funded through the Oakland County Community Mental Health Authority.



United Way
for Southeastern Michigan

The CLS Long Term Care Division is funded by: United Way of SE Michigan and the City of Allen Park.

Com
locat
1939

www.comliveserv.com